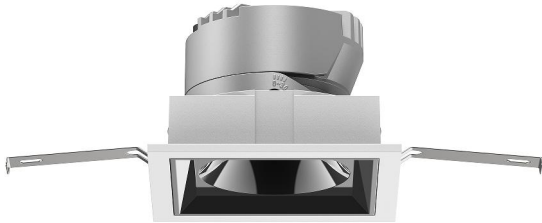


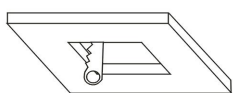
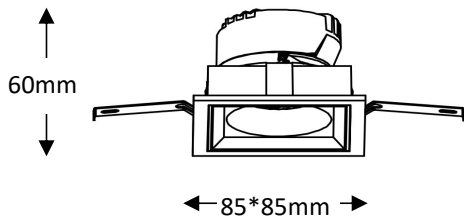
## Recessed Spotlight

Product Code  
**OPTISL12AS8W220V**  
**OPTISL12AS8W220VD**



|                             |                                      |
|-----------------------------|--------------------------------------|
| <b>IP rating</b>            | 54                                   |
| <b>Ik rating</b>            | 8                                    |
| <b>Source type</b>          | High power LED                       |
| <b>Source life time</b>     | >50,000h at 25°C ambient temperature |
| <b>CRI</b>                  | >90                                  |
| <b>Step McAdam</b>          | 3                                    |
| <b>Source flux</b>          | 960 lm                               |
| <b>Source efficiency</b>    | 120 lm/W                             |
| <b>Delivered flux</b>       | 640 lm                               |
| <b>Delivered efficiency</b> | 80 lm/W                              |
| <b>Input power</b>          | 8W                                   |
| <b>Supply voltage</b>       | 100~240V AC                          |
| <b>Insulation Class</b>     | insulation class III                 |
| <b>Power supply</b>         | Lifud driver constant current        |
| <b>Material</b>             | aluminum                             |
| <b>Light colour/CCT</b>     | 3000K/4000K/6000K                    |
| <b>Beam angle</b>           | 15/24/36/55°                         |
| <b>Mounting</b>             | ceiling-recessed                     |
| <b>Reflector color</b>      | Black/White/Silver                   |
| <b>Finishing</b>            | white/black                          |

## Technical drawing



cut size:75\*75mm

## Temperature limits

|                            |                |
|----------------------------|----------------|
| <b>Working temperature</b> | -30C° to +50C° |
| <b>Storage temperature</b> | -50C° to +80C° |

## Light control

ON/off, optional DALI dimming

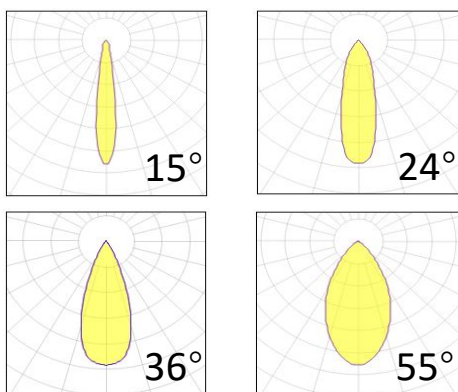
## Construction

- Cast aluminum trim routes heat away from electrical components
- Adjustable, spring loaded retention tabs ensure secure fixture retention
- Certified for direct contact with insulation

## Warranty

- 5-year limited system warranty standard
- Warranty does not cover product failure due to an overvoltage event (power surge)
- For installations where power surge may be possible, NICOR recommends installing additional surge protection at the electrical distribution panel

## Photometrics



## Specifications

