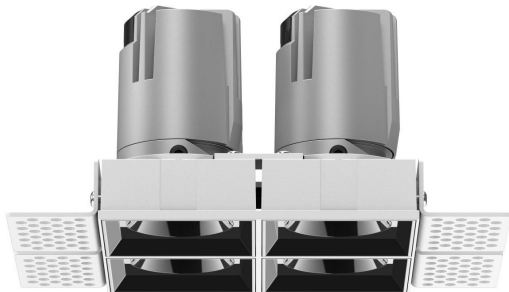


## Trimless Recessed Spotlight

Product Code

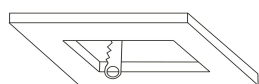
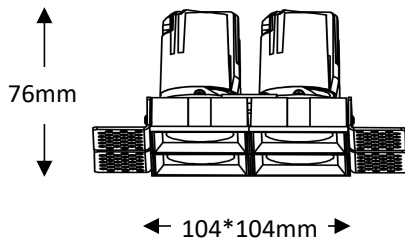
**OPTISL11AS4\*7W220V**

**OPTISL11AS4\*7W220VD**



<b>IP rating</b>	54
<b>Ik rating</b>	8
<b>Source type</b>	Hight power LED
<b>Source life time</b>	>50,000h at 25°C ambient temperature
<b>CRI</b>	>90
<b>Step McAdam</b>	3
<b>Source flux</b>	3360 lm
<b>Source efficiency</b>	120 lm/W
<b>Delivered flux</b>	2240 lm
<b>Delivered efficiency</b>	80 lm/W
<b>Input power</b>	4*7W
<b>Supply voltage</b>	100~240V AC
<b>Insulation Class</b>	insulation class III
<b>Power supply</b>	Lifud driver constant current
<b>Material</b>	aluminum
<b>Light colour/CCT</b>	3000K/4000K/6000K
<b>Beam angle</b>	15/24/36/55°
<b>Mounting</b>	ceiling-recessed
<b>Reflector color</b>	Black/White/Silver
<b>Finishing</b>	white/black

### Technical drawing



cut size:105\*105mm

### Temperature limits

<b>Working temperature</b>	-30C° to +50C°
<b>Storage temperature</b>	-50C° to +80C°

### Light control

ON/off,optional DALI dimming

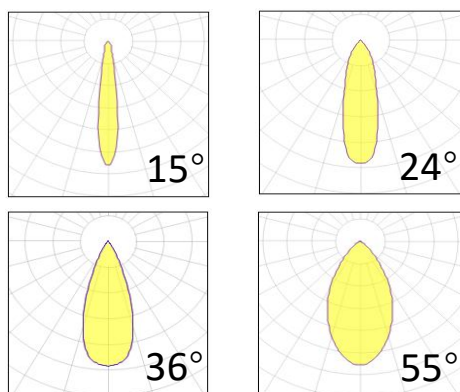
### Construction

- Cast aluminum trim routes heat away from electrical components
- Adjustable, spring loaded retention tabs ensure secure fixture retention
- Certified for direct contact with insulation

### Warranty

- 5-year limited system warranty standard
- Warranty does not cover product failure due to an overvoltage event (power surge)
- For installations where power surge may be possible, NICOR recommends installing additional surge protection at the electrical distribution panel

### Photometrics



### Specifications

